



Pulteney Close, London, E3

BUTLER & STAG



Excellent two bedroom split-level apartment perfectly positioned between the wonderful green spaces of Victoria Park and the amenities of Roman Road.



- Two Bedroom Split-Level Apartment
- Moments from Victoria Park and Roman Road
- Two Large Double Bedrooms
- Very Well Presented Throughout
- Balcony
- Furnished
- Available 21st December 2024
- Suits a Couple or Two Professional Sharers

Well presented and spacious throughout, the property benefits from two large double bedrooms and would ideally suit two professional sharers or a couple requiring work-from-home space.

Featuring a bright living room with dining space and a stylish kitchen and bathroom, a private balcony provides some much coveted outside space.

Offered furnished and available from 21st December, Bow Road, Mile End and Hackney Wick stations are all within easy reach.

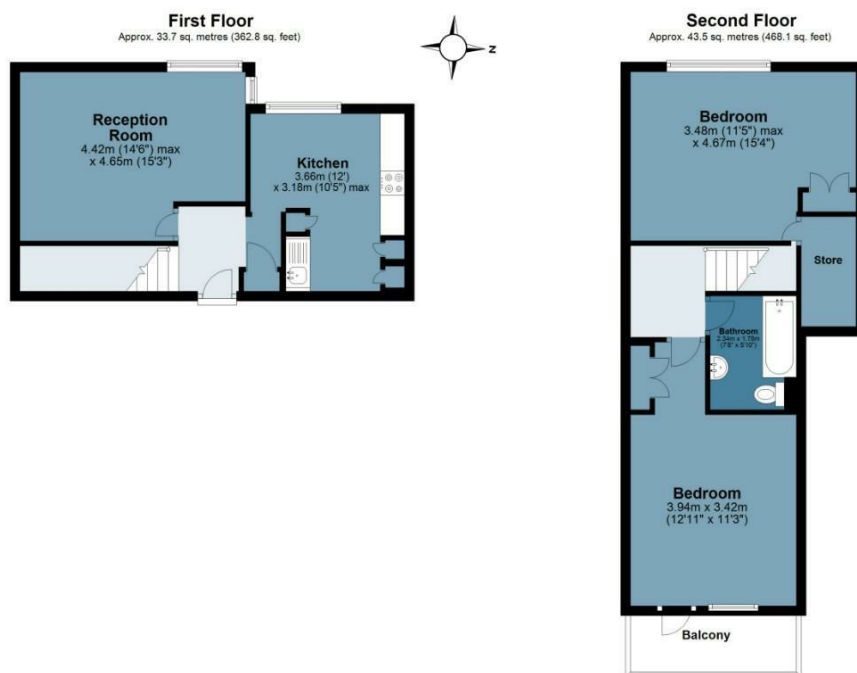




Pulteney Close

Approx. Gross Internal Area 77.2 Sq M (831 Sq Ft)

BUTLER & STAG



Measurements are approximate and for illustration purposes only. While we do not doubt the accuracy and completeness, we advise you conduct a careful independent assessment of the property to determine monetary value.
© @modephoto.uk www.modephoto.co.uk

IMPORTANT NOTICE - These particulars have been prepared in good faith and they are not intended to constitute part of an offer or contract. We have not performed a structural survey on this property and the services, appliances and specific fittings have not been tested. All photographs, measurements, floor plans and distances referred to are given as a guide and should not be relied upon.

BUTLER & STAG

☎ 020 8102 1236

🏠 508 Roman Road, Bow, London, E3 5LU

✉ bow@butlerandstag.com

www.butlerandstag.uk